



Lightweight Three Phase Isolation Transformer For Energy Distribution

Our Product Introduction

Basic Information

- Place of Origin: China
- Brand Name: JXRMT
- Certification: CE IEC70076.11 GB1094.3-2003
- Model Number: ITVT35
- Minimum Order Quantity: 18 units
- Price: consult prices online
- Packaging Details: consult online
- Payment Terms: T/T



Product Specification

- Rated Capacity: 2000kVA To 31,500kVA
- High Voltage Tap Range: 35kV To 38.5kV
- Low Voltage: 6.3kV To 10.5kV
- No Load Loss (for 2000kVA): 1.84 KW
- Load Loss (for 2000kVA): 18.2 KW
- Cooling Method: F- Oil-immersed Air Cooling
- Highlight: **38.5kV Three Phase Isolation Transformer, Lightweight Three Phase Isolation Transformer, 35kV 3 phase isolation transformer**

for more products please visit us on fuhaosolar.com

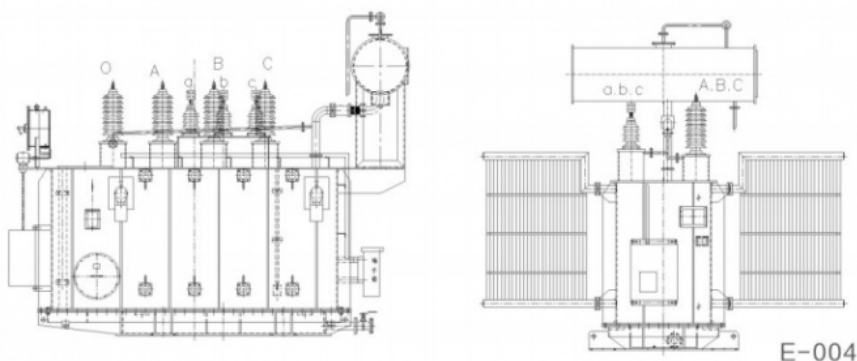
Product Description

Compact and Lightweight Three Phase Isolation Transformer for Energy Distribution

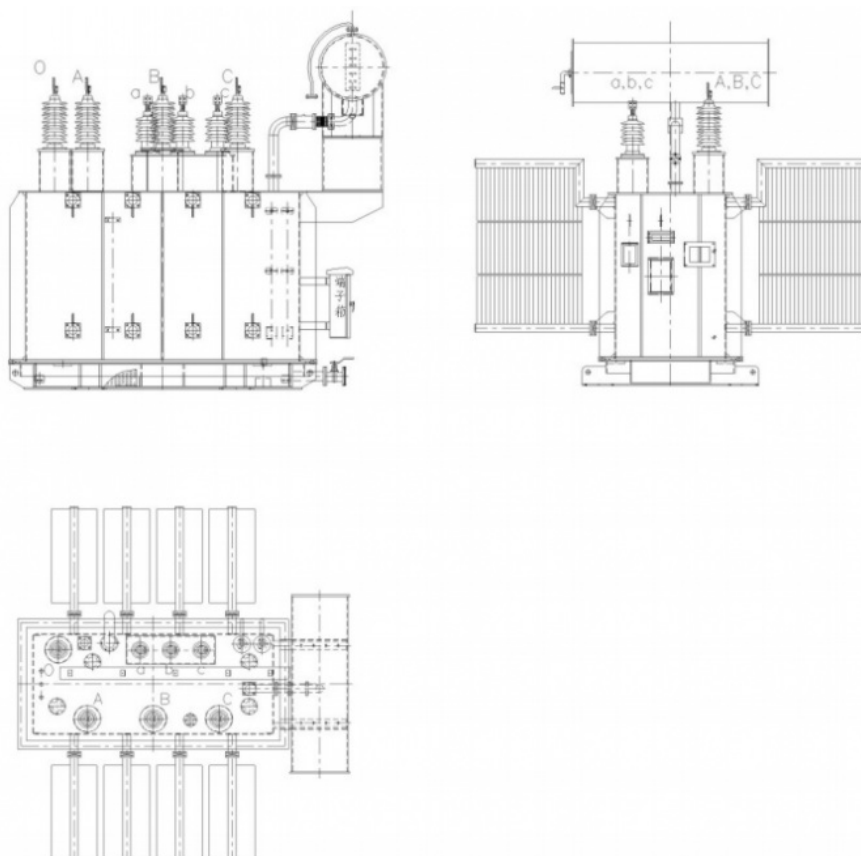
Product Description:

This 35kV three-phase oil-immersed on-load voltage regulating power transformer is designed with advanced material, process, and structural innovations to meet modern energy distribution demands. With a compact design, lightweight structure, effective operation, and low operating costs, it significantly reduces power losses and ensures reliable operation. This transformer is ideal for reducing grid losses, enhancing system efficiency, and supporting sustainable energy practices. Suitable for outdoor installation, it features good durability and is compliant with international transformer standards. It serves large-scale applications such as power plants, substations, and industrial enterprises.

35kV three-phase double-winding on-load regulating power transformer



35kV three-phase double-winding unexcited voltage regulating power transformer



TECHNICAL PARAMETERS											
630kVA-31500kVA three-phase double-winding unexcited voltage regulating power transformer											
Rated capacity kVA	Voltage combination and tap range			Coupling	No-load loss kW(9)	Load loss kW(9)	No-load current %	Short circuit impedance %			
	High voltage (KV)	High voltage tap range	Low voltage(kV)								
630	35	±2×2.5%±5	3.15 6.3 10.5	Yd11	0.660	7.47	0.52	6.5			
800					0.780	8.93	0.52				
1000					0.920	10.9	0.52				
1250					1.12	13.2	0.44				
1600					1.35	15.8	0.36				
2000					1.74	17.4	0.36				
2500					2.05	18.6	0.36				
3150	35-38.5	±2×2.5%±5	3.15 6.3 10.5	Yd11	2.40	21.9	0.36	7.0			
4000					2.90	25.9	0.36				
5000					3.50	29.7	0.36				
6300					4.20	33.3	0.36				
8000	35-38.5	±2×2.5%	3.15 3.3 6.3 6.6 10.5	YNd11	5.80	36.5	0.28	8.0			
10000					7.00	43.0	0.28				
12500					8.00	51.1	0.24				
16000					9.70	62.5	0.24				
20000					11.5	75.5	0.24	10.0			
25000					13.6	89.3	0.20				
31500					16.2	106.4	0.20				
2000kVA-31500kVA three-phase double-winding on-load voltage regulating power transformer											
Rated capacity kVA	Voltage combination and tap range			Coupling	No-load loss kW(9)	Load loss kW(9)	No-load current %	Short circuit impedance %			
	High voltage (KV)	High voltage tap range	Low voltage(kV)								
2000	35	±3×2.5%	6.3 10.5	Yd11	1.84	18.2	0.40	6.5			
2500					2.18	19.6	0.40				
3150	35-38.5				2.60	23.5	0.40	7.0			
4000					3.10	27.6	0.40				
5000					3.70	32.5	0.40				
6300					4.50	34.9	0.40				
8000	35-38.5		6.3 6.6 10.5	YNd11	6.30	38.6	0.32	8.0			
10000					7.40	45.6	0.32				
12500					8.70	54.0	0.28				
16000					10.5	66.8	0.28				
20000					12.4	78.6	0.28	10.0			
25000					14.6	92.9	0.24				
31500					17.4	110.2	0.24				

Application:

This transformer is primarily used in large-scale energy distribution systems, including power stations, industrial plants, and substations. Its role is to step down or step up voltage levels in energy transmission systems, facilitating efficient energy distribution while maintaining system stability. Additionally, its robust design makes it suitable for outdoor installation, even in challenging environmental conditions, ensuring a stable power supply across diverse applications, such as mining operations, factories, and national grids.

Shipping Methods

Supports global air and sea shipping

If you require more detailed product information or have customized requests, please contact us. Providing efficient service that satisfies our customers is our responsibility.



RICHGOOD ENERGY CO.,LTD



willa@fuhaosolar.com



fuhaosolar.com

Rm3810 Baoli E Building Pa Zhou Haizhu district Guangzhou