



## MR-G-D Double Brush Solar Panel Cleaning Robot

### Our Product Introduction

#### Basic Information

- Place of Origin: China
- Brand Name: MSZN
- Certification: CE
- Model Number: RG
- Minimum Order Quantity: 18 units
- Price: consult prices online
- Packaging Details: consult online
- Payment Terms: T/T



ZN-Right Left Solar Cleaning Robot

#### Product Specification

- Double Roller Brushes: Offers Improved Cleaning Effectiveness, Especially For Panel Edges And Corners
- Edge Sensing Technology: Prevents The Robot From Sliding Off Panels And Ensures Precise Cleaning
- Lightweight Design: Weighing Less Than 30kg, It Is Easy To Install And Move
- Intelligent Self-Correction: Automatically Adjusts Its Position To Prevent Deviation Or Jamming During Operation
- Automatic Rain Mode: Opens And Operates In Rainy Conditions With Automatic Shutdown When Cleaning Is Complete
- Adjustable Brushes: The Brush Position Can Be Modified For Enhanced Cleaning Capacity And Extended Service Life
- Cleans Large Arrays: Capable Of Cleaning Up To 1.2MWp Of Solar Panels Per Day
- Remote Control: Fully Automated With Remote Control Options For Convenient Operation And Management

## Product Description

### Maximize Cleaning Efficiency with the MR-G-D Double-Brush Solar Panel Cleaning Robot

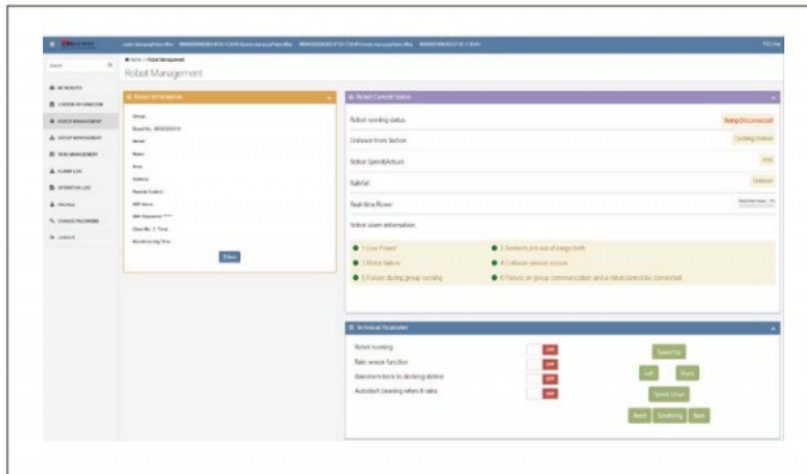
#### Product Description:

The MR-G-D double-brush solar panel cleaning robot is designed for efficient and intelligent cleaning of solar panels. Equipped with a dual roller brush system, it delivers superior cleaning performance, especially at the edges of the photovoltaic array where single brushes typically struggle. The robot operates by automatically walking right and left along the aluminum frame to ensure thorough cleaning across multiple rows of solar panels. With advanced edge-sensing technology and lightweight construction under 30kg, this device ensures smooth operation on various installations and complex arrangements. Additionally, it includes intelligent correction during operation to avoid machine deviation and jamming, enhancing its reliability. The brush pressure can be adjusted to maximize cleaning efficiency and extend brush service life. It also operates automatically in rainy conditions, providing 24/7 continuous cleaning.



## ● Controller/Remote Smart Management Control System

### Remote Smart Management Control System



#### Application:

The MR-G-D solar panel cleaning robot is ideal for use in various photovoltaic power stations, including those with complex arrays and uneven surfaces. It is designed for large-scale solar panel installations and can clean up to 1.2MWp per day. Suitable for multiple terrains, it can efficiently handle slopes, steps, and misalignments. The robot's remote-control capability ensures easy operation in large-scale solar farms and provides maintenance-free, automated cleaning solutions for enhanced solar energy output.

#### Shipping Methods

Supports global air and sea shipping

If you require more detailed product information or have customized requests, please contact us. Providing efficient service that satisfies our customers is our responsibility.



**RICHGOOD ENERGY CO.,LTD**



[willia@fuhaosolar.com](mailto:willa@fuhaosolar.com)



[fuhaosolar.com](http://fuhaosolar.com)

Rm3810 Baoli E Building Pa Zhou Haizhu district Guangzhou