

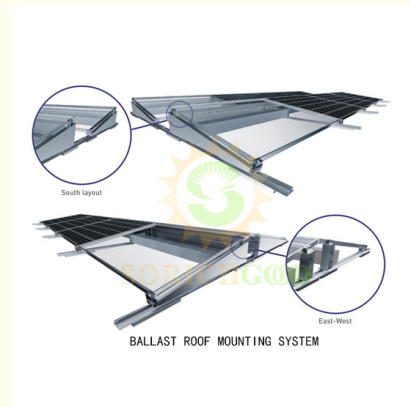


High Wind And Snow Load Resistant Steel Mounting Systems For Solar Panels

Our Product Introduction

Basic Information

- Place of Origin: China
- Brand Name: XMKS
- Certification: CE
- Model Number: BALLASTR
- Minimum Order Quantity: 100 sets
- Price: consult prices online
- Packaging Details: consult online
- Payment Terms: T/T



Product Specification

- Material: Aluminum AL6005-T5 Stainless Steel/SUS304
- Standard: AS/NZS 1170 JISC8955-2017 And Other International Standards
- Wind Speed & Snow Load: Up To 60m/s Up To 1.4 Kn/m²
- Applicable Module: Frame Or Frameless
- Warranty: 10 Years Warranty, 25 Years Service Life
- Highlight: **High Wind Steel Mounting Systems, AL6005 Steel Mounting Systems, T5 metal roof solar mounts**

Product Description

High Wind and Snow Load Resistant Steel Mounting Systems for Solar Panels

Product Description:

This product is a highly durable, non-penetrating ballast mounting system specifically designed for flat rooftops. Made from a combination of aluminum AL6005-T5 and stainless steel SUS304, it is built to withstand high wind speeds and snow loads. The unique design ensures that no damage is done to the roof during installation, offering a cost-effective solution for large-scale solar panel installations. With pre-assembled components, the system significantly reduces construction time and labor costs.



Features

- 1 **Non-penetrating design**
Non-penetrating design won't cause any roof damage
- 2 **Protecting windshield**
Windshield is available for protect the whole system
- 3 **Cost effective**
East-west ballast mounting on the flat rooftop allowing for greater energy production
- 4 **Pre-assembly**
Maximum pre-assembled to save construction time and labor cost

Components



Inter clamp



Bottom clamp



End clamp



Base rail & EPDM rubber



Rail connector



Ballast plate



Rear leg



Front leg

Application:

This ballast mounting system is ideal for large commercial and industrial solar installations, especially on flat rooftops. Its non-penetrating design makes it particularly suitable for locations where roof integrity is a concern. Additionally, the system is pre-assembled, making it an excellent choice for projects requiring fast and efficient installation.

Shipping Methods

Supports global air and sea shipping

If you require more detailed product information or have customized requests, please contact us. Providing efficient service that satisfies our customers is our responsibility.



willa@fuhaosolar.com



fuhaosolar.com

Rm3810 Baoli E Building Pa Zhou Haizhu district Guangzhou