



## Intelligent Lithium Battery Powered Quadcopter Drone For Mission Equipment

### Our Product Introduction

#### Basic Information

- Place of Origin: China
- Brand Name: XQ
- Model Number: L10
- Minimum Order Quantity: 8 units
- Price: consult prices online
- Packaging Details: consult online
- Payment Terms: T/T



#### Product Specification

- Wheelbase: 980mm
- Max Takeoff Weight: 14kg
- Max Payload: 2kg
- No-load Endurance: 60min
- Max Flight Altitude: 5000m
- Max Flight Speed: 20m/s
- Highlight: **Lithium Battery quadcopter drone,  
14kg quadcopter drone, 20m/s quadcopter**

for more products please visit us on [fuhaosolar.com](http://fuhaosolar.com)

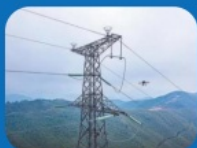
## Product Description

### Intelligent Lithium Battery Powered Quadcopter Drone for Various Mission Equipment

#### Application fields



Smart City



Power Line  
Inspection



Event Security



Forestry Security

#### Product Description:

The Iris L10 is a versatile and high-performance quadcopter designed for industrial applications. Its lightweight structure, folding arms, and adjustable tripod allow for easy transport and flexible mounting options. Powered by an intelligent lithium battery, it provides extended flight time and supports various mission equipment such as pods, laser radars, and loudspeakers. With a robust communication interface and powerful control system, the Iris L10 ensures reliable and stable operation in challenging environments, making it suitable for various industrial missions.

Product Specifications	
Category	Specifications
Model	Quadcopter
Wheelbase	980mm
Power Source	Lithium Battery
Max TakeoffWeight	14kg
MaxPayload	2kg
No-load Endurance Time	60min
Max Flight Altitude	5000m
Max Flight Speed	20 m/s
Max Ascent/Descent Speed	3 m/s 2m/s
Wind Resistance	Level7
Operating Temp.	-20°Cto 50°C
Hovering Accuracy	GPS working normally, Horizontal:±1.5m Vertical:±0.5m;
RTK Positioning Accuracy	RTK FX, Horizontal:1.0cm+1ppm; Vertical1.5cm+1ppm
Unfolded Dimensions	L1330xW1325XH442mm
Folded Dimensions	L505XW390XH248mm

Mission Load	Electro-Optical Pod/Loudspeaker/ LiDAR,etc.
--------------	--

#### **Application:**

The L10 excels in applications like smart city monitoring, power line inspection, event security, and forestry security. Its foldable structure allows for compact storage, while its ability to carry different mission loads makes it adaptable to diverse operational needs. Whether it's surveying infrastructure or securing public spaces, the Iris L10 offers reliability and precision.

#### **Shipping Methods**

Supports global air and sea shipping

**If you require more detailed product information or have customized requests, please contact us. Providing efficient service that satisfies our customers is our responsibility.**



**RICHGOOD ENERGY CO.,LTD**



[willa@fuhaosolar.com](mailto:willa@fuhaosolar.com)



[fuhaosolar.com](http://fuhaosolar.com)

Rm3810 Baoli E Building Pa Zhou Haizhu district Guangzhou