



Securely Mount Solar Panels With Aluminum Alloy Mounting Systems

Our Product Introduction

Basic Information

- Place of Origin: China
- Brand Name: LS
- Certification: ISO 9001/ISO 14001/OHSAS 18001/CE Marking/UL 2703
- Model Number: MCS
- Minimum Order Quantity: 500 sets
- Price: consult prices online
- Packaging Details: consult online
- Payment Terms: T/T



Product Specification

- Material: 6005-T5 Aluminum Alloy
- Surface Treatment: Anodization AA15
- Tensile Strength: 260N/mm²
- Rail Size: 40×30×1.2 Mm
- Vertical Fixture Size: H60mm
- Side Block Size: H35mm
- Rail Connector Size: U35×15×2.0 Mm
- Compatibility: Designed For Color Steel Tile Roof Installations
- Highlight: **T5 Aluminum Alloy Mounting Systems, 6005 Aluminum Alloy Mounting Systems, Aluminum Alloy solar panel mounting hardware**

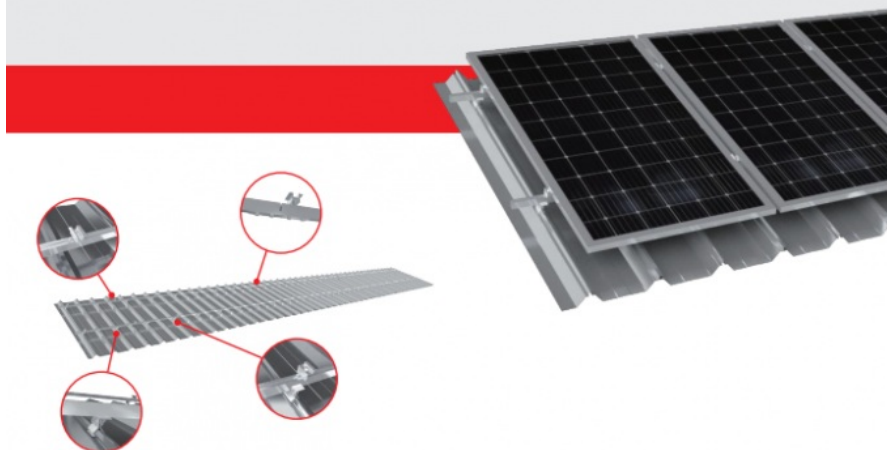
Product Description

Securely Mount Solar Panels with Aluminum Alloy Mounting Systems

Product Description

The **Mounting System for Color Steel Tile Roof** is a highly reliable and efficient solution for solar panel installations on color steel tile roofs. This system is crafted from durable 6005-T5 aluminum alloy, ensuring long-lasting performance and resistance to corrosion. The anodized AA15 surface treatment further enhances its durability, with a tensile strength of 260N/mm², making it ideal for various environmental conditions. The system includes essential components such as aluminum alloy rails, side blocks, vertical fixtures, and rail connectors, all designed for easy and secure installation. The innovative design of this mounting system ensures maximum stability and alignment of solar panels, optimizing energy production while maintaining the structural integrity of the roof.

MOUNTING SYSTEM FOR COLOR STEEL TILE ROOF



Mounting Components

Aluminum alloy rail

Size / Model	40x30x1.2 mm
Material	6005-T5
Surface treatment and mechanical property	Anodization AA15, tensile strength 260N/mm ²



Side block

Size / Model	H35mm
Material	6005-T5
Surface treatment and mechanical property	Anodization AA15, tensile strength 260N/mm ²



Vertical fixture

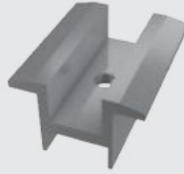
Size / Model	H60mm
Material	6005-T5
Surface treatment and mechanical property	Anodization AA15, tensile strength 260N/mm ²



Rail connector	
Size / Model	U35x15x2.0 mm
Material	6005-T5
Surface treatment and mechanical property	Anodization AA15, tensile strength 260N/mm ²



Medium block	
Size / Model	H35mm
Material	6005-T5
Surface treatment and mechanical property	Anodization AA15, tensile strength 260N/mm ²



Application

This mounting system is specifically designed for installations on color steel tile roofs. It is ideal for residential, commercial, and industrial applications where solar panels need to be securely mounted on metal roofs with minimal intrusion. The system's flexibility allows for quick assembly and installation, making it suitable for both small-scale and large-scale solar projects.



RICHGOOD ENERGY CO.,LTD



willa@fuhaosolar.com



fuhaosolar.com

Rm3810 Baoli E Building Pa Zhou Haizhu district Guangzhou